



COUNCIL PRESIDENT ALLEN COFFMAN & MAYOR DARREN BROWN AT 2016 ICEFEST

# 2015

# ANNUAL REPORT

**The Only Town in Pennsylvania  
with All Services & Utilities:**

ELECTRIC  
DISTRIBUTION

TRASH

EMERGENCY  
SERVICES

ELECTRIC  
GENERATION

STORMWATER

LAND USE

WATER

NATURAL  
GAS

RECREATION

SEWER

POLICE

PUBLIC WORKS

## + 2016 FORECAST

Published April 2016

# 2016 BEGINS WITH A NEW TOWN COUNCIL

By Jeffrey Stonehill



**JEFFREY STONEHILL**  
Borough Manager &  
Director of Utilities

In December 2015, the outgoing Town Council adopted a spending plan for 2016, which included a number of significant changes, priorities, projects, and proposals for the incoming Town Council, which you elected in November 2015; and who took their oaths of office in January 2016.

At the end of 2015, Bradley Elter, William McLaughlin, Thomas Newcomer, and Elaine Swartz left Council. At the beginning of 2016, Samantha Bietsch, Herb Dolaway, Alice Elia, and Kathy Leedy joined Council. At the biannual reorganization meeting, Allen Coffman was reelected as Council President and Heath Talhelm as Vice President. Sean Scott was elected as Finance Chair, Samantha Bietsch as Assistant Finance Chair, and Herb Dolaway as Personnel Liaison.

A budget is a spending plan, a roadmap for the upcoming year. Unlike the federal budget which is wildly confusing and out of balance, your local township, city or borough budget must be in balance, cannot use gimmicks or tricks, is published before adoption for all to read, and thoroughly debated in open public meetings so that Council can hear a variety of opinion. Yet because of its openness, the local budget is honest and therefore somewhat sobering. The number one question we get from those who review the budget is "isn't there some other pot of money, some other trick to balance the budget that I am not seeing?" The utility departments are what make our budget large and complex because the balance of our governmental operation is fairly simple.

Chambersburg Borough has the most complex budget in Pennsylvania. Unlike every other town, including big cities, Chambersburg has over a dozen separate funds (accounts) because all the utilities are kept segregated from the other operations of the Borough. Chambersburg's fiscal size is larger than Harrisburg or Lancaster or York; because of the utilities. We use cost based accounting. Like a law firm or doctor, many employees bill their time and equipment to the various functions upon which they are working. So, many transactions are money being spent between the separate funds, to cover expenses; back and forth, thousands of internal transactions.

So why can't we just take utility money and pay for police officers and firefighters? Because the Borough cannot wholesale move funds from utilities, which are kept in separate accounts, to the General Fund to pay for fire, police or parks. Nor would this be fair to utility customers. Also, the Electric Department and the Gas Department already make a Payment in Lieu of Gross Receipts Taxes (PILOTs) to the General Fund. If these two departments were private corporations, they would pay taxes to the Commonwealth, as such, they are tax exempt. So instead, they pay their taxes to support your General Fund (police, fire, ambulance, highway, and recreation) activities. State law does not allow the Sewer Department to make similar payments. We could ask the Water Department to pay taxes but we have not done so in years.

So while most of the budget deals with the complex issues of running utilities, the issue that gets the most attention is the real estate tax; which is only a Police Tax and a Fire Tax.

Until 2014, 100% of the real estate taxes collected by the Borough of Chambersburg were used exclusively to support the Chambersburg Police Department.

In 2014, a small share was added to support apparatus operated by the Chambersburg Emergency Services Department. All the real estate taxes collected within the Borough are used exclusively for the Police Department and to support the apparatus operated by the Chambersburg Emergency Services Department; none of this revenue is used to support any other department or operation. We do not use any real estate taxes to support parks or recreation, highways or streets, any other employees such as the Borough Manager, or any other function or utility.

We discuss the Police Tax and the Fire Tax, but the Borough budget is so much larger than this issue. Chambersburg is one of 35 boroughs in Pennsylvania to own and operate an electric utility. Chambersburg is the largest municipal electric utility in the State, twice as large as the second largest, Ephrata, Lancaster County; and, the only one to operate generation stations. Chambersburg is one of two municipalities in Pennsylvania to own and operate a gas utility. The other is Philadelphia, which does not operate an electric utility. Chambersburg is one of around 2,000 communities to own an electric system and one of 800 communities to own a gas system but one of only about 50 to own both. Chambersburg operates a regional water system and a regional sanitary sewer system; not through an independent Authority or an intermunicipal board, but under Council control directly. Chambersburg operates a trash utility, a parking utility, and a new storm sewer utility; one of the first storm sewer utilities to form under the new Federal mandate to regulate stormwater.

Almost all the employees of the Borough and most of the equipment of the Borough is owned and operated by our utility departments (Electric, Gas, Water, Sewer and Sanitation Departments) and our utility support departments (engineering, motor equipment, and administrative services). Your taxes do not support any utility operations, personnel or equipment. Further, as the budget document reveals, the Borough's utility rates are very reasonable.

Most of the Borough's utilities are on sound fiscal footing. The Electric Department has seen significant growth through the aggressive management of our wholesale electric costs. The Sewer Department is working diligently on controlling costs to maximize the existing revenue from our customers. The Water Department has had no water rate increase since 2001 despite growing operational costs. The Gas Department has the lowest residential heat rate in the State of Pennsylvania, and successfully manages its finances.

**The 2016 budget did NOT include utility rate increases for water, sanitary sewer, electric, natural gas or storm sewer.**

In 2016, staff did propose the first Sanitation rate increase since 2005. However, we also added perhaps the most significant service increase ever, curbside single stream recycling.

The other state permitted taxes are set by law and are not changed year-to-year. They include the Local Services Tax, which is a \$1 per week tax on workers inside the Borough; the Earned Income and Wage Tax, which is a set tax on wages earned by those who live inside the Borough; and the Deed Transfer Tax, which is a set tax when property inside the Borough is sold or transferred. These are all already set at the maximum allowed by State law. Chambersburg can seek no increase nor do they need to be recertified annually. Together, along with fees and fines, these categories make up the only revenues of the Borough. Also, the Electric Department and the Gas Department make a Payment in Lieu of Gross Receipts Taxes (PILOTs) to the General Fund.

**In Chambersburg, our citizens pay no dedicated Recreation Tax, no dedicated Highway Tax, and no taxes at all to support the Borough's utilities or utility support departments.**

The Borough of Chambersburg did not raise real estate taxes between 2007 and 2013; and only once in the last decade before 2016. Taxes were raised by others such as Franklin County or the Chambersburg Area School District. In 2014, the Borough raised taxes but only to fund police and fire services. In 2016, the Borough, once again raised taxes but only to fund police and fire services.

Unless you own property inside the Borough, or have a job inside the Borough, you pay the Borough no taxes. Further, if you just have a job in the Borough you pay only \$1 per week to the Borough and nothing else. In fact, almost no township residents contribute any tax money to the Borough. For example, the Sales Tax collected at stores inside the Borough all goes to support others, not the Borough. Finally, the Borough has no relationship with Chambersburg Area School District taxes or Franklin County taxes.

The Borough utilities sell a considerable amount of utility services in the new Norland Avenue shopping neighborhood due to the increasing size of the Borough's independent utility accounts. However, these developments generate very little additional taxes to support the Borough. Most of the revenue they create is in the form of Sales Tax and in Pennsylvania, local municipalities receive no Sales Tax share. Further the sale of alcohol generally provides almost zero income to the host municipality. These developments have been very good for our community and create lower unemployment but, they do not generate income proportional to the responsibilities they create for police, fire and traffic.

Many types of properties within the Borough are exempt under State law from paying real estate taxes to support the Police and Fire Departments. Those exempted properties include schools, colleges, churches, charities, and other government agencies. So, these property owners add to the economic vitality of our community but do not necessarily contribute any money to support police or fire services. However, some of these agencies (The Menno Haven Retirement Community, Keystone Health, and Chambersburg Hospital are good examples) make voluntary contributions in support of the Borough's public safety services regardless of their tax exempt status. We encourage all tax exempt property owners to donate to the police and fire services every year. If you volunteer at an organization, ask if they contribute to police and fire services.

Unfortunately, the Borough can't bill people directly for police and fire instead of using real estate taxes. State law prohibits the levy of taxes as a fee on persons (called per capita taxes). Instead, the law allows us only to use property as the sole means to determine how much tax to collect. We have only one tool in our toolbox. So, if you rent your property, your landlord will pay the real estate tax and it will be reflected in the rent you pay. There is no other system allowed by the State. The Ambulance Club is not a tax or fee; rather, it is more like a donation. You provide us a gift and in exchange, we accept assignment from your health insurance company if you need to use the Borough ambulance service. We encourage every resident to join the Chambersburg Ambulance Club; even if your insurance doesn't require it.

State law requires that emergency services such as police, fire, and ambulances respond to all dispatches for health and safety. The Borough's emergency services will always support our township neighbors regardless of money issues.

We also enjoy the support of the various volunteer fire companies from the townships and the Pennsylvania State Police. Mutual aid is a very important principle in public safety. The local townships do not have police departments. They rely on the Pennsylvania State Police. They do not have township employee fire departments. They rely on the generosity of volunteer firefighters. All of the Borough's local real estate taxes go for these functions. And while some might wish to not have paid police and fire departments, unfortunately we cannot go back.

We use the other taxes of the Borough (such as Earned Income Tax and Deed Transfer Tax) to pay for the Highway Department and the Recreation Department. The Sanitation Department is a separate utility (not unlike the Electric, Gas, Water, or Sewer Departments) and they keep the streets clean, free of leaves, and well swept. Highway construction projects are done with Highway Aid grant money (a grant from the State created by the sale of Liquid Fuels). Our grant only pays for street construction made to Borough owned streets. Keeping up with all highway maintenance on Borough streets without a dedicated funding source is very challenging. We try to keep much of the Recreation Department as self-supporting with user fees; such as the Memorial Park Pool. Finally, the Land Use and Community Development programs are generally supported with fees.

In general the Commonwealth of Pennsylvania does not allow us the right to raise any other type of taxes. In 2014, the Town Council requested that the General Assembly allow Franklin County to raise the County hotel tax and share proceeds with Chambersburg. That proposal was not approved by the State. Also, sales tax, liquor taxes, business taxes, and other local taxes are not an option under State law. In 2015, the State proposed an increase in the hotel taxes across the State; for tourism, with a prohibition on using them by any local town for anything else.

**The truth is we have very little revenue, very few opportunities to increase revenue and a lot of responsibilities.**

One of our toughest challenges is keeping up with more than 58 miles of Borough streets. First, it is important to recognize that the Borough does not own or maintain many of the streets inside the Borough. The Pennsylvania Department of Transportation maintains most of the major streets such as Main Street, Memorial Square, Lincoln Highway, Second Street, Loudon Street, Wayne Avenue, Scotland Avenue, and many others. The Borough maintains the parking on State streets and the pipes underneath; but not the streets themselves. The Borough owns most of the side streets and many of the alleys. The Borough utilities start fixing pipes in all streets about two years before a street is due to be paved. With so many old streets, there are a lot of pipes being fixed at any one time. The Borough only has the Highway Aid grant money account to fix our streets and repaving costs a lot of money when government bid rules are followed. Of course, the Borough does not pay to fix State owned streets, County owned bridges, private alleys, or township roads. Finally, the Borough has let some streets degrade as we have neither the resources to pave them nor do those streets have the traffic flow to justify the expense. We do use grants whenever possible. It is a never ending battle to keep up with street maintenance with no dedicated funding source.

... CONTINUED ON PAGE 4

For example, the US11 paving project through town in 2015 was exclusively a State project. Most of the streets that are being paved in the Borough are either State owned streets or paid for by grants or developers as they build adjacent projects. The Borough has no dedicated funding source beyond the Highway Aid grant money (a grant from the State created by the sale of Liquid Fuels) to pave your Borough owned street. In the end, a small street or alley is going to get patches or neglect; there is no way to fix every street in the Borough.

Most of our vehicles are owned by the Motor Equipment Fund and rented to the utilities, not the General Fund. The only vehicles rented by the General Fund are police vehicles, fire vehicles and recreation equipment. Your taxes do not pay for vehicles for the utilities. Your taxes go only to support the Police Department equipment and vehicles and to provide fire and EMS equipment and vehicles for the Emergency Services Department. Almost all projects (and some of those too) are by our utility departments

(Electric, Gas, Water, and Sewer) or our utility support department, Administrative Services. So really, when it comes down to the budget gap, it is a police, fire, recreation or street paving issue.

In the 2015 budget, adopted in December 2014, it was anticipated that the Borough Police Department would cost \$667,680 more than the yield from the 21 mil Police Tax. I recommended that Council consider some increase in the 21 mil Police Tax levy, but Council provided no relief.

**Then, the Council added three additional police officers and one civilian employee with the intention of maybe lowering back the staff sometime in the future through retirements.**

While that remains to be seen, in the meantime, it meant extra police staff and extra police salaries. So, as a result, in 2016, the Police Tax was raised from 21 mil to 23 mil to pay for extra police payroll and benefits.

## FIRE TAX 2016

This budget has no increase in the Fire Tax; which would remain at 2.5 mil for 2016. 100% of the Fire Tax goes to support the apparatus of the Chambersburg Emergency Services Department and not for any other department or function or employee or use.

	2007	2008	2009	2010	2011	2012	2013	2014	2015	2016
TAX RATE	0	0	0	0	0	0	0	2.5	2.5	2.5
<b>Average Single Family House Inside the Borough</b>								<b>2014</b>	<b>2015</b>	<b>2016</b>
FIRE TAX (fluctuates based on median house value)								\$41.29	\$40.77	\$41.84

## POLICE TAX 2016

This budget has an increase in the Police Tax; which would go from 21 mil in 2015 to 23 mil in 2016. 100% of the Police Tax goes to support the Chambersburg Police Department and not for any other department or function or employee or use.

	2007	2008	2009	2010	2011	2012	2013	2014	2015	2016
TAX RATE	20	20	20	20	20	20	20	21	21	23
<b>Average Single Family House Inside the Borough</b>								<b>2014</b>	<b>2015</b>	<b>2016</b>
POLICE TAX (fluctuates based on median house value)								\$346.84	\$351.45	\$386.94

These are the only real estate taxes collected by the Borough of Chambersburg and their only uses. If your tax bill is higher than these examples, it is because either you are including other taxes in your evaluation (such as the Franklin County real estate tax), because your Franklin County property assessment is above average, or because you own commercial or industrial real estate.

- **No change to the electric rate** (Avg. Residential \$100.90 per month)  
Second year no increase after three straight decreases
- **No change to the sewer rate** (Avg. Residential \$29.50 per month)  
One of the lowest sewer rates in the area
- **No change to the gas rate** (Avg. Residential \$804 per year)  
Least expensive residential heat gas in Pennsylvania
- **No change to the storm sewer pollution control fee**  
The second year with a fee of only \$3 per month per account
- **No change to the water rate** (Avg. Residential \$15 per month)  
No increase in the Water rate since 2001!

# 2016 BUDGET GOALS & PROJECTS

A full copy of the 2016 budget is available on the Borough website at:  
[www.chambersburgpa.gov](http://www.chambersburgpa.gov) (Click on Transparency)

## Goal A -

- **Expanding Municipal Services**  
Work with townships towards regionalism

## Goal B -

- **A Safe, Clean, Green and Healthy Community**  
Downtown cameras, maintenance, bike/pedestrian study & Sustainable PA Certification

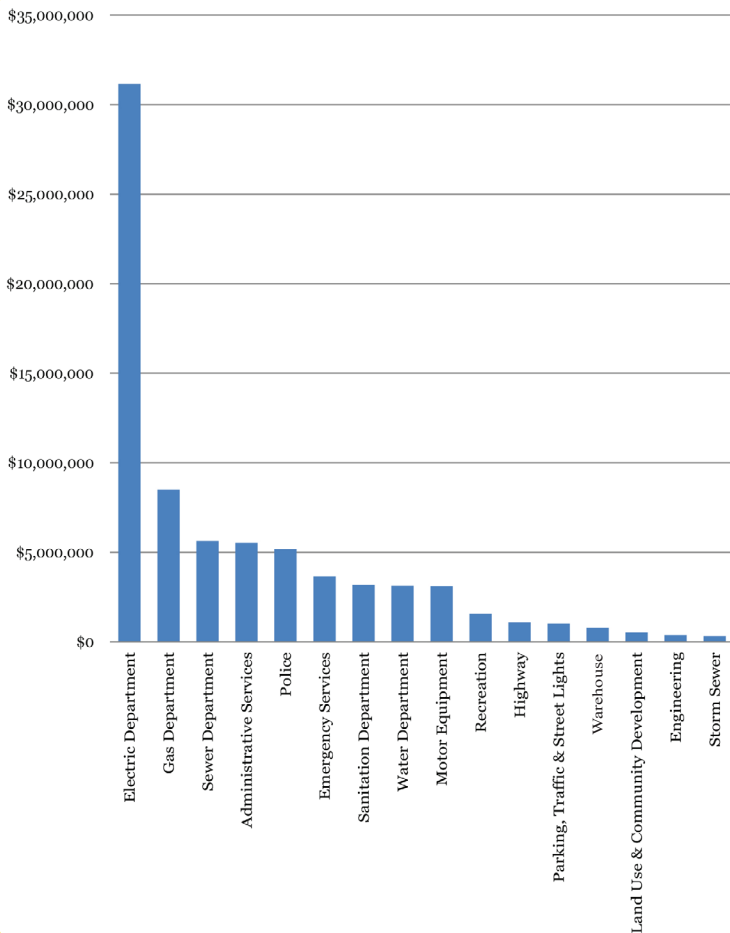
## Goal C -

- **Settling Big Infrastructure Issues**  
City Hall, Memorial Pool, & North Chambersburg Transportation Improvements

## PROJECTS

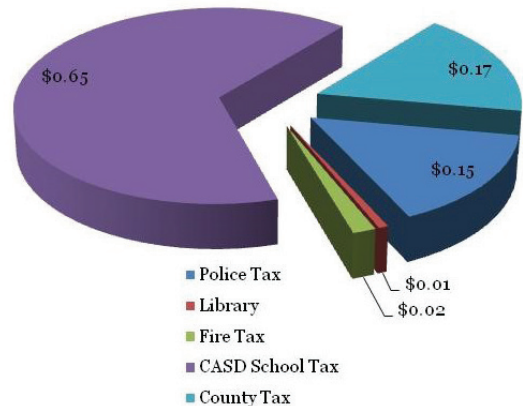
- Significant Utility Capital Expenditures
- Nicholson Square Park Improvements Project
- Mike Waters Memorial Park Building Upgrade
- Healthy Community Initiative (North Square Farmers Market)
- Reliable Public Power Provider Program from the APPA (RP3)
- Main Street Energy Efficiency Financing Program
- Upgrade Project for the Borough's Traffic Signal Network
- Multiple Departments' Software & a new Borough website
- 2016 Street Improvements - \$1,990,000 in paving projects

## RELATIVE SIZE OF BOROUGH DEPARTMENTS



## TOTAL TAX BURDEN

	2016		
FRANKLIN COUNTY	25.65 mil	\$429.27	16.96%
LIBRARY	1.05 mil	\$17.57	0.69%
CHAMBERSBURG AREA SCHOOL DISTRICT	98.426 mil	\$1,655.88	65.41%
POLICE TAX	23 mil	\$386.94	15.29%
FIRE TAX	2.5 mil	\$41.84	1.65%
<b>TOTAL</b>	<b>143.858 mil</b>	<b>\$2,531.50</b>	<b>100%</b>



Only 17¢ of every \$1 paid in real estate taxes will go to the Borough of Chambersburg. The balance, 83¢ will go to support the school district, the County, and the library. In fact 65¢ of every dollar goes to the Chambersburg Area School District.

# COUNCIL APPROVES DESIGN & ENGINEERING FOR ADDITION TO CITY HALL

By Jeffrey Stonehill



**In July and September 2013, the Borough of Chambersburg Water Department took ownership of the properties adjacent to Borough Hall, 220 E Queen Street and 216 E Queen Street respectively. The acquisitions were for the purposes of planning for a potential Utility Departments' addition to Borough Hall.**

In 2014, SGS Architects Engineers, Inc. of Carlisle Pennsylvania performed a Needs Analysis where they evaluated City Hall and the Police Annex for future office space needs of the Borough. That Needs Analysis was presented in December 2014. The conclusion of the Needs Analysis was that the Borough utility departments, and more importantly the utility support departments, were clearly out of space in City Hall.

The first part of City Hall, the clock tower, was built in 1830 and survived the Burning of Chambersburg. A series of additions expanded the clock tower by adding pieces onto the building. In modern times, a major renovation was done in 1957, when much of the north part of City Hall was constructed or reconstructed. Then, in 1971, the Police Department and Council Chambers addition was added to the 1957 structure. That addition was 45 years ago. Since then, other than regular maintenance and updating the windows, the building has remained unchanged. Since 1970, the population of the Borough has increased 19% and technology including surveillance cameras, high speed data lines, servers, and many more employees has been stuffed in every nook and cranny of the facility. In addition, the building is definitely not up to modern standards of building codes for light, ventilation or safety standards.

In 2015, a Building Committee of Town Council was formed who met and talked about City Hall and other potential sites or concepts for utility department office space needs. At the conclusion of that discussion, it was recommended by Staff that Town Council proceed with the design of a Utility Departments Addition to City Hall for the Queen Street side of this building. Any talk of renovating this old building would be placed on the back burner while a modern addition was placed on the east side of the existing building and interconnected. In the summer of 2015, the lot on the east of City Hall was cleared of the homes and their foundations.

SGS Architects Engineers, Inc. of Carlisle, PA presented a project scope to develop a design for the efficient usage of this adjacent property. On June 8, 2015, Town Council approved undertaking the design stage to evaluate the utility departments of the Borough in terms of public access, safety, office needs, technology, parking, etc. The SGS team met and worked with the Building Committee of Town Council to insure that their vision for the addition was being met.

On November 23, 2015, the SGS team will present their recommended vision for a Utility Departments Addition for City Hall. Deliverables for the project will include full design of the addition,

layout and construction cost estimates. So far all the planning, like the land itself, has been paid by the Water Department; one of the future tenants for the space.

On February 8, 2016, Town Council authorized staff to move the design process to the next and final stage. The 2016 approved budget includes a subsequent expenditure by the Water Department to do final blueprints and bidding to determine the actual cost of construction.

By the end of 2016, Town Council will be faced with the final decision to move ahead with construction of the Utility Departments Addition for City Hall. It is important to contemplate the alternative. If Town Council fails to build the Utility Departments Addition for City Hall, then either the next step would be the gutting and renovation of the various components of the original City Hall building or reviving the search for offsite office space.

The SGS team explored both of these alternatives in depth with the Building Committee. It was determined that any renovation to the existing City Hall would be twice as expensive as building a modern addition. Further, that renovation would bring the building into the 21st Century but provide no additional space. Second, a quick visit to all available sites and buildings in downtown Chambersburg quickly ruled out any relocation for the Borough offices.

There is no doubt that building a Utility Departments Addition for City Hall will be expensive. However, if managed properly, this project, which focuses on utility uses, should cause no increase in taxes at all. Further, while it is never a guarantee, financing a building project at today's low interest rates should provide a new facility that will last the Borough at least 50 years (think back to the 1971 decision to build the Police Department and Council Chambers addition) and will be paid back by the utility departments through a mortgage on the building over a twenty-five year time frame.

**The goal is to bid construction by the end of 2016 so that Council can evaluate the total cost of construction along with the 2017 budget. If approved, construction would begin early in 2017 and run through 2018 with a grand opening of the addition in late 2018 or early 2019; or approximately 47 years after the last changes to City Hall.**



**Proposed Utility Departments Addition to City Hall**

A full copy of the Utility Addition presentation is available on the Borough website at:  
[www.chambersburgpa.gov](http://www.chambersburgpa.gov) (Click on Transparency)

# COMMUNITY TACKLES HUMANE WAY TO CARE FOR FERAL CATS

By Jeffrey Stonehill



In January 2016, Town Council held a meeting to discuss the most effective and humane way to care for the feral or wild cat population in the Borough. While there are a lot of opinions, experience in many other towns demonstrates that there are incredible challenges including social, behavioral, financial, and moral issues when dealing with feral cats. This is clearly no simple problem. However, Council did want to point out some helpful concepts to the public while struggling with solutions:

According to The Humane Society of the United States:

"Nuisance behaviors, such as urinating and defecating in someone's yard or garden, digging in someone's yard or garden, jumping on someone's car, and upsetting an owned cat, are the greatest concerns that the general public has about outdoor cats."

"A stray cat is a pet who has been lost or abandoned, is used to contact with people, and is tame enough to be adopted. A feral cat is the offspring of stray or feral cats and is not accustomed to human contact. Feral cats are usually too fearful to be handled or adopted."

"Stray cats may be reunited with their families or adopted into new homes, but feral cats will find it difficult or impossible to adapt to living as pets in close contact with people. But that doesn't mean there aren't many things you can do to improve feral cats' health and quality of life."

"Overpopulation is a serious concern, as well. In the United States, approximately 2 percent of the 30 to 40 million community (feral and stray) cats have been spayed or neutered. These cats produce around 80 percent of the kittens born in the U.S. each year. Although 85 percent of the estimated 75 to 80 million pet cats in the U.S. are already spayed or neutered, many have kittens before they are spayed or neutered. Those kittens, especially if they are allowed outdoors, add to the number of outdoor cats and the problems associated with them."

"Spaying or neutering community (feral and stray) cats using trap-neuter-return (TNR) will reduce their numbers. Spaying or neutering pet cats before they reproduce will reduce their numbers and help stop pet overpopulation."

"Trap-neuter-return (TNR) is a nonlethal strategy for reducing the number of community cats (feral and stray) and improving the quality of life for cats, wildlife, and people. At its most basic, TNR involves humanely trapping community cats, spaying or neutering them, vaccinating them against rabies, surgically removing the tip of one ear (a "tipped" ear is the universally-recognized sign of a cat who has been spayed or neutered), and returning the cats to their home."

"There are many reasons cat problems are rarely solved by trapping and removing a colony. Community (feral and stray) cats live at a certain location because it offers food and shelter. If a colony is removed, cats from surrounding colonies may move in to take advantage of the newly available food and shelter. The cycle of reproduction and nuisance behavior begins all over again. If all the cats in a colony are not trapped, then the ones left behind will tend to have larger litters of kittens."

"The logic behind bans against feeding feral cats is that if there is no food available, the cats will go away. This rarely happens. First, cats are territorial animals that can survive for weeks without food and will not easily or quickly abandon their territory. As they grow hungrier and more desperate, they tend to venture closer to homes and businesses in search of food. Despite the effort to starve them out, the cats will also continue to reproduce, resulting in the deaths of many kittens. Second, feeding bans are nearly impossible to enforce. A person who is determined to feed the cats will usually succeed without being detected. Repeated experience has shown that people who care about the cats will go to great lengths, risking their homes, jobs and even their liberty to feed starving animals. In addition, there may be more than one feeder and other sources of food, including dumpsters, garbage cans and other animals."

The Borough of Chambersburg does not currently have a feeding ban for feral cats for this reason. We strongly recommend against the outright feeding of feral cats and encourage alternative ways to deal with these animals such as organizing your neighborhood to establish a Trap Neuter and Return program.

The Borough of Chambersburg has no prohibition on humanely trapping community cats or any animal on your private property. Trapped animals can be brought to the Cumberland Valley Animal Shelter.

Town Council has asked staff to draft a law that would encourage neighborhoods to establish a Trap Neuter and Return program with local volunteers. A law will be presented later this year.

If you have any questions about animal codes, call Phil Wolgemuth, Assistant to the Borough Manager, at (717) 261-3232 or research the matter at The Humane Society of the United States: [www.humanesociety.org](http://www.humanesociety.org)



**ALLEN COFFMAN**  
President of the  
Town Council

## MESSAGE FROM THE PRESIDENT OF THE CHAMBERSBURG TOWN COUNCIL

By Allen Coffman

**As I write the annual message, we are almost at the close of 2015 and preparing for the arrival of 2016.**

We have many good things that were accomplished in 2015. One was the US Route 11 paving project completed by the State. While not perfect, it worked out pretty well. Although this major resurfacing project was paid for by the State,

the preliminary utility work was completed by the Borough prior to repaving. Yes, there were areas that had to be repaired after the compaction portion of the project, but they were few in the scope of the overall project and not uncommon with the compaction work involved.

The formal opening of our Green Yard Waste Recycling Center located on Commerce Street (in Hamilton Township) was accomplished in April 2015.

... CONTINUED ON PAGE 8

# MESSAGE FROM THE PRESIDENT OF THE CHAMBERSBURG TOWN COUNCIL

CONTINUED...

By Allen Coffman

This all new facility takes the place for the activities formally done at the Borough farm located in the South end of town near the Waste Water Treatment Plant. These services will no longer be done at the old location. The Borough farm is closed for any such activities. Both residents and businesses may use the new facility. Please ask for the details and costs at Borough Hall. As a reminder, grass clippings are considered trash and may not be taken to the Recycling Center.

In an effort to gain additional parking in the downtown area, negotiations with the Shook Home allowed us to gain and consolidate more public parking to support local businesses. This action did come with a price but we felt the advantages certainly outweighed the cost.

Eight Borough streets were also fixed using the full depth reclamation method. This process reuses the existing base material and adds water and cement to form a solid base which is then overlaid with a wearing course. There are eight more streets scheduled for rebuilding or special coatings in 2016.

During early November of 2015 we were notified that Chambersburg will receive \$4.15 million dollars of federal funding from the Pennsylvania Department of Transportation. This federal money is from Congestion Mitigation and Air Quality (CMAQ) funding. This grant will be used to pay 100% of the upgrades to our traffic signal system around town. This is truly significant as no local funds are required to receive this grant. Our signal system is composed of a variety of control units many of which are outdated but also includes some state of the art equipment. This will now allow us to have a totally modernized system. This was only possible due to an excellent presentation to the Franklin County Metropolitan Planning Organization (MPO) made by our Land Use and Development Director Phil Wolgemuth and Jeff Heverley from our Electric Department. This presentation lead to unanimous support by the MPO for this project.

We do have several projects continuing from 2015 into 2016. We expect the Waste Water Treatment Plant upgrade to be completed in the June 2016 time frame. The unexpected problems have been addressed and the project continues to move forward. This plant will serve not only Chambersburg but also Greene Township, Guilford Township, Hamilton Township, and indirectly part of Letterkenny Township. At about \$39 million dollars, this is the largest public works project in our town's history. The North Chambersburg Transportation Improvement Project is continuing to progress as well. This consists of improvements to the Norland and Fifth Street intersection, the extension of Parkwood Drive to Grand Point and Kohler Roads in Greene Township,

and the connection of St. Paul Drive to Parkwood Drive. This project is being supported by a grant of \$2.8 million dollars from PennDot's Multimodal Transportation Fund.

In 2015 the Borough of Chambersburg has also finalized and signed five year labor agreements with both the Chambersburg Police Officers Association and also the American Federation of State, County, and Municipal Employees Local #246. These agreements are the result of many hours of honest, thoughtful, and civil negotiation with Borough officials, our solicitor's office, and union representatives.

As we enter into 2016, there are many projects either coming to fruition or in the planning stages. Some of these projects are the Washington Square development, the Central High School redevelopment by McKissick Associates, the Sunoco (CNG) compressed natural gas station, the Coyle Free Library expansion, the Shook Home expansion, and the fountain restoration for our square. The fountain area provided us a unique opportunity to place the Christmas tree in center square for 2015. Hopefully you enjoyed this once in many years event and got plenty of photos to commemorate the event. It will be many years until this happens again. The fountain should be returning from its restoration in April 2016. Single stream recycling will be new in 2016. With this program, all recycled items will be picked up on a weekly basis on the same day as trash. The additional charge for this feature will not start until June 2016.

I want to recognize councilmen who are leaving us as well as the newly elected members starting in January 2016. Leaving us are Tom Newcomer, Bill McLaughlin, Elaine Swartz, and Brad Elter. Bill and Tom each served the residents of Chambersburg for twenty four years. Elaine served for twelve years and Brad for four years. We wish all of them well in their retirements and future endeavors.

The new members are Alice Elia (First Ward), Samantha Beitsch (Second Ward), Kathy Leedy (Third Ward), and Herb Dolaway (Fifth Ward). Sharon Bigler was reelected to her seat in the Fourth Ward.

There is more I could report on as our Borough is never standing still. I'm sure other items will be addressed by the various department heads. Right now I expect the issues of expanding Borough Hall to provide additional utilities space, the pool discussion to decide what should be done and how much to spend, (This would be followed with a referendum choice on the ballot in the fall of 2016), determine how to fund alley improvements, and find a replacement for retiring Police Chief Arnold to be items discussed early in 2016.



**DARREN BROWN**  
Mayor

## MESSAGE FROM THE MAYOR OF THE BOROUGH OF CHAMBERSBURG

By Darren Brown

**As Mayor of Chambersburg, my primary role is to oversee the Chambersburg Police Department.**

Although I am the elected department head, it is the Chief of Police under me who actually directs the police officers. It is comparable to a commissioned and noncommissioned officer leadership duo in a military unit.

During my first two years in office, David Arnold was the Chief of Police. However he retired at the very beginning of 2016 after 31 years in law enforcement. I thank him for his faithful service and wish him well.

During 2015 we worked together to expand community policing within the Borough of Chambersburg. One of the more noticeable features of this endeavor was the establishment of the Community

... CONTINUED ON PAGE 9



# MESSAGE FROM THE MAYOR OF THE BOROUGH OF CHAMBERSBURG

CONTINUED...

By Darren Brown

Policing Substation located at 41 West Washington Street. This substation provides a second location for police officers to work and be more accessible to the public. Additionally it provides a safe place for people to enter and talk to police.

Now in 2016 the Chambersburg Police Department is in an interim period. Sergeant Rick Morrisette has taken on the responsibility of being the Acting Chief of Police while a search is undertaken to find a permanent replacement. This statewide search is expected to take approximately six months and will be conducted by a nonprofit organization from Lafayette College. A committee composed of four Borough Council Members, the Borough Manager, and myself; will interview this organization's top recommendations. Finally the entire Borough Council will publicly vote to approve the next Chief of Police.

In the meantime I have the fullest confidence in Sergeant Rick Morrisette to faithfully execute his duties of leading the police under his command. He is also actively working with me to plan for new

innovations in the Chambersburg Police Department. Firstly he is implementing plans to ensure that the Community Policing Substation is more readily used. Secondly, based on his experience as a K-9 sergeant, he is working to make the police dogs more available to aid patrol squads. Thirdly Sergeant Morrisette is also increasing the usage of our motorcycle patrols. Furthermore the Chambersburg Police Department will soon be on social media as a way to reach the public in their homes or wherever they can access the internet. All of these innovations essentially come down to a better management of resources.

I am excited about where the Chambersburg Police Department is going in both the interim and when the new chief of police takes command. Additionally I am thankful to continue working with Borough Council President Allen Coffman and Borough Manager Jeffrey Stonehill in a unified effort to keep the Borough of Chambersburg moving forward.



## CHAMBERSBURG POLICE DEPARTMENT By Sergeant Richard Morrisette

**SGT RICHARD MORRISSETTE**  
Interim Police Chief

**In 2015 the Chambersburg Police Department made a stronger, more concerted effort to provide more community policing and positive police/citizen contacts.** We began by increasing our foot patrols by 570% from the previous year, getting out of the cars and positively engaging citizens 1,662 times. We experimented with a satellite station, in a troubled area, to help bring higher police activity where needed. We also dedicated two officers, Cpl. Good and Pfc. Leisher, to specifically seek out opportunities within the community for positive interaction. They completed 136 such activities as a community team. We will continue to look forward in ways to better serve and build relationships with our community. While we saw the retirement of two veteran officers, Cpl. Brian MacDonald and Det. Scott Mummert in 2015, we also welcomed new hires Patrolmen Eric McGinnis and James Iverson. Both completed the police academy in November 2015, and then began their twelve week field training program. During this same year, we saw the military deployment of Patrolman Wilson, who will be deployed to Guantanamo Bay, Cuba for more than a year.

In April, we welcomed the addition of a new Community Service Officer, Oliver Arispe. Oliver has a variety of functions within our department and has been a valuable asset with Spanish translation throughout the Borough.

The Chambersburg Police Department has added hardware in two of our patrol vehicles making e-tickets possible. The method of e-tickets will reduce the amount of time an officer has a citizen on the side of the roadway. E-tickets will also be sent electronically to the Magistrate's Office, reducing clerical clutter and time spent performing that function. This hardware will also make it possible for officers to quickly enter needed data at traffic crashes, allowing us more time helping traumatized accident victims, or clearing the roadway timely.

The Chambersburg Police Department replaced "in-car" video cameras. The new cameras assist us with proper documentation of evidence and supervisor review of police activity. This technology has proven itself invaluable, as cases are successfully documented and prosecuted in court.

The year of 2015 was a busy year. As our Borough continues to grow, so does the demand for police services. We saw a 21.3% increase in police incidents from the previous year, during which our officers continue to provide professional responses to keep our community safe.

Finally, December 2015 brought about the announcement that Chief David Arnold was ready for retirement. Although he will be missed, he leaves behind a group of dedicated men and women who will continue to carry out the mission of the Chambersburg Police Department.



**Cpl. M. Taylor & K-9 Rownan; Officer Sgrignoli & K-9 Basco**

# CHAMBERSBURG FIRE DEPARTMENT

By Chief Howard "Butch" Leonhard

**In 2015, the Borough of Chambersburg's General Fund, which finances the Chambersburg Fire Department (CFD), continues to be extremely tight.** Emergency medical responses are on the rise with an annual average of 4,113 responses, and EMS staffing issues persist.

Fire responses rose 9.8% to 978 incidents. CFD remains resourceful in pursuit of other avenues of funding to achieve the Department's goals. CFD offers many services that enhance fire safety in the Borough of Chambersburg, e.g. a triennial inspection/permit program; annual fire inspections to day care centers, health care businesses, and institutional or industrial facilities for State or Department of Health compliance; staff fire safety training and evacuation drills.



**Firefighter/EMT  
Jeremy Whitmore**

CFD promoted Firefighter/EMT Dustin L. Ulrich to the position of Assistant Emergency Services Chief on January 12, 2015. Also, one new Firefighter/EMT, Jeremy Whitmore joined CFD August, 2015 and graduated December 2015 from HACC Fire Academy.

The Borough Gas and Water Departments aided in the continuation of CFD's aggressive community risk reduction efforts by providing free carbon monoxide detectors for gas customers and hydrant markers that aid in locating fire hydrants at night or during snowfalls. Participating with community partners, we were able to conduct many educational programs and interact with 17,000 people in our target groups.



**This year, Chief Howard "Butch" Leonhard and Assistant Chief Dustin Ulrich both received their Bachelor's Degree in Fire Administration along with the award of Chief Fire Officer.**

**The Chambersburg Fire Department is in a class of its own since it is one of only three departments in the State to have two or more officers with the Chief Fire Officer designation.**

CFD continues to train, implement new programs, and drive to bolster volunteer ranks. As active volunteer numbers decline, a second ambulance to serve fire and EMS protection to area residents on the south end is necessary to significantly reduce the number of missed responses.



**Self Contained  
Breathing Apparatus**

The Borough/State contributed \$72,474 to the Chambersburg Firemen's Relief Association; in return, the Chambersburg Firemen's Relief Association funded \$178,300 for new Self Contained Breathing Apparatus (SCBA) designed to enhance CFD safety by providing respiratory protection while handling all types of fire and HazMat emergencies. These SCBA will allow CFD members to operate in toxic and oxygen deficient areas.

2015 also brought two state grants totaling \$20,616 that provided bedding and turnout gear. CFD plans to seek AFG funds totaling \$112,000 in 2016 for the installation of diesel exhaust systems at Headquarters and McKinley Street Stations to provide a safe and healthy work environment.

Overall, 2015 was a very productive year. The Chambersburg Fire Department will strive to meet the fiscal and operational challenges in 2016 and work with local fire departments, municipalities, and Franklin County to welcome regionalization of Fire/EMS services and Fire Code inspections in hopes of providing the best possible community service to area residents.

## 2015 RECREATION HIGHLIGHTS

By Guy Shaul - Parks & Recreation Superintendent

**In 2015 renovating some major Recreation facilities became a department priority.**

During the summer the Henninger Playground Pavilion received a face lift by a scout who was working on his Eagle Scout Project. A new metal roof was installed. The concrete floor and pillars were stained and the interior was painted. The project turned out great.

Another Recreation facility received a face lift as well in 2015. Gym 1 at the Eugene C. Clarke Jr. Community Center was the old Market house after it moved from Borough Hall. The gym was created later

house after it moved from Borough Hall. The gym was created later and for many years shared the space with the market. Over the years the gym floor has taken quite a lot of traffic. At one time community dances were held here. People would also roller skate on the old concrete floor.

It was time for the floor to get a new look. The old surface was a combination of layers of epoxy and urethane. This was removed to expose the old concrete floor. The concrete surface was smoothed

... CONTINUED ON PAGE 11

out and a new padded floor was installed. The new modern surface will be a welcome site for many years to come and also will be easier on the knees and ankles. We also screened the wooden floor in Gym 2 and recoated the surface with 2 layers of urethane. We do this every 3-5 years. If you are out and about and would like to check our gyms out we would be glad to see.

Our largest project of the year was to demolish the rental units on 3rd st. across from the community center and make a temporary green space for the neighborhood. The future plans include installing more parking for the community center in that lot.

It was a busy year but 2016 could be even busier depending on the future plans of the Chambersburg Memorial Pool.

### Citizen Conservation Corps Program

Beginning in 2014, as a part of the Pennsylvania Workforce Development Project, the Chambersburg Recreation Department has organized a Citizen Conservation Corps to work in Borough Recreation Department facilities. The Corps members were students, who worked in crews under the guidance of skilled, adult crew leaders. They gained hands-on training in carpentry, masonry, landscaping and other trades, while being offered a variety of off-site educational opportunities, such as GED preparation, vocational-technical classes, college courses and job shadowing by another organization. Projects might include tree planting, building and fixing recreation pavilions, or planting and maintaining flowerbeds. The first year of the program was a big success. We will try again in 2016.

### Social Media

In 2015, the Borough authorized a test [www.twitter.com](http://www.twitter.com) id for the Recreation Department: @ChambersburgRec in addition to the unique website already in operation.

### Healthy Community

In 2016, we want to use the North Square Farmers Market and their connection to the organic Fulton Farm at Wilson College as a base to expand healthy food choices education among the Borough's youth. It is our hope to underwrite the development of an outreach program to community youth and school kids to encourage their commitment to a healthy lifestyle.



### Mike Waters Memorial Park Building Upgrade

In 2016, the Recreation Department will create a new Women's restroom entrance on the outside of the park building, create an exterior hallway back to Men's restroom and possibly re-locate the water fountain. In addition, faux stone or brick face will be installed to make the building more attractive, and security cameras and lights will be relocated. Finally, a large tree near the building will be removed and the nearby pathway relocated. The estimated cost of these improvements is \$39,000.

One of the most significant questions facing the community in 2016 is what will be the future of the Borough's Memorial Park Pool?

In 2015, Town Council authorized the Recreation Department to hire an aquatic engineering and design firm with sufficient knowledge and experience to assist our staff with evaluation of our existing municipal pool complex. The consultant team of MKSD Architects and Councilman-Hunsaker Aquatics identified issues of technical, health, safety, and mechanical in nature, proposed conceptual solutions including a variety of choices and alternatives and work with Town Council in preparing for a public debate on the cost-benefit of the various alternatives, which would extend the useful life of this important community asset for generations.

**The full presentation is available on the Borough website [www.chambersburgpa.gov](http://www.chambersburgpa.gov)**

In addition to suffering from the seasonal impact of weather on the pool operation, the Memorial Park Pool has recently found it difficult to collect enough revenue to balance the cost of operation on an annual basis. In addition, no capital reserve has been established to rebuild or reconstruct the facility.

There are some remarkable facts that we discovered during this project: the Memorial Park Pool is one of the largest municipal pools in terms of gallons of water we found (equal to pools in New York City and Philadelphia). The pool has been well maintained but was first, designed in a 1969 manner which means most of the pool is unused by today's kids, and second, is full of features that do not meet today's health and safety codes. Finally, a modern pool would have less deep water, lots of splash pads, and more shade and fun features.

The consultants broke their analysis into two parts: the first reviewed the current condition of the facility and categorize what repairs, changes, or improvements are needed to extend the useful life for a minimum of 10 years. The second developed a concept for a modern aquatic or water based municipal recreation facility of a size and scope compatible with the fiscal constraints, demographic projections, and possible user base found in Chambersburg.

**The pool was well maintained and will clearly operate for the 2016 season. However, the time is now to discuss its future and the costs associated.**

Unfortunately, public pools are very expensive to build and operate. The Memorial Park Pool is used by all of Franklin County. This is why the Borough charges two different rates, one for Borough residents and a second for residents outside the Borough. It would be nice if there could be a regional effort to build a modern aquatics facility that would increase real estate values and attract new employers to Chambersburg. Town Council, and the community, is going to have to decide how much money they are willing to spend to build such a facility in the future.



**Proposed Memorial Park Pool Replacement**

# 2015 GAS DEPARTMENT UPDATE & 2016 FORECAST

By John Leary - Gas Department Superintendent



**2015 was an historic year for the Borough Gas Department. Our customers continue to have the lowest priced gas in Pennsylvania, and are now paying less for gas than they have at any time since 1995.**

We continue to improve the safety of an already safe system, and we're currently expanding our customer base at the greatest rate in decades. Historically, our residents paid 20%-30% less for gas than private gas company customers. This difference is currently 49%. Over the past 12 months, the average Borough resident using 71 hundred cubic feet of gas (CCF) paid \$612 for gas, compared to \$1,196 for the average local gas company customer using the same amount of gas.

The low gas prices in the Borough reflect a net savings to our customers of over \$7,000,000 per year! Additionally, through our Payment in Lieu of Taxes (PILOT) and payments for essential shared services, the Gas Department contributed \$1.42 million to the operation of the Borough in 2015. These contributions help to keep residents' taxes low. Municipalities served by private gas companies see none of these benefits.

The Borough gas system is already considered among the safest systems in the US, with no reportable gas safety incidents in over 25 years. But we aren't content to stand where we are, and continue to work on further improvements to safety.

In 2015, the Borough replaced about a mile of aging Cast Iron (CI) gas mains, and plans in 2016 to replace almost another mile of CI mains. Since 2000, we have replaced over 15 miles of CI gas mains, bringing our total from 25 miles of CI mains to 10 miles at the end of 2015. CI mains are capable of lasting in excess of 100 years, but can be prone to cracking during freeze/thaw cycles. Replacing these mains, as well as simultaneously replacing all connected old steel service lines, has significantly reduced our leak rates and further improved the safety of the system.

To further demonstrate our system safety, the PA PUC conducted two inspections of our system in 2015, with 0 violations found.

Additionally, in 2015 the Borough was awarded the APGA Safety Award for the second straight year in "Recognition of the Successful Efforts your System has made to Ensure the Safety of your Employees and Customers and the Integrity of your Gas System".

The Gas Department continued our partnership with the Fire Department to purchase Carbon Monoxide (CO) detectors for Borough homeowners. CO is a silent but deadly killer which can and has affected Borough residents. Over 1,000 CO detectors have already been provided by the Gas Department.

The Borough Warehouse has been able to continue to eliminate holding excess inventory in stock. Having too much inventory on hand is a drain on finances, and leads to waste from inventory becoming obsolete or damaged prior to use.

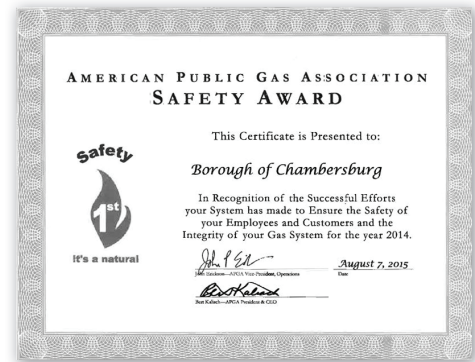
A continuing success story has been the Main Street Energy Efficiency Financing Program. Financially backed by our gas supplier, the Municipal Gas Authority of Georgia, this program offers interest free loans of up to \$5,000 for Borough residents to convert their furnaces and water heaters to natural gas. To date, 330 homes have participated in the program, with \$1.4 million in loans paid out. Converting to gas heat saves many customers several thousand dollars per year in heating costs.

Looking forward to 2016, the Gas Department anticipates our customers' gas bills will be as low or lower than in 2015. We anticipate adding 100 more gas customers in 2015, with half being through the loan program.

We also anticipate another busy year of CI gas main replacement. This will include the replacement of CI mains on King Street and Elder Street. Additionally, we anticipate continuing to expand our system to more areas of the Borough, potentially including Kennebec Drive, Stanley Avenue (from Stouffer to Brandon Drives) and the Stonegate/Highfield area.

The Sunoco Compressed Natural Gas (CNG) fueling facility on S. Main Street is also planned to open in the first half of 2016. This project has taken longer than anticipated, in part due to lower gasoline and diesel prices the past few years, but we are looking forward to its grand opening next year.

The Customer Service Center looks in 2016 to expand our benefits to the Borough. We recognize that our mission is to serve Borough residents and Borough operations, and this fact governs all that we do.



## ELECTRIC IS HOPEFUL - ENTERING A WELCOMED NEW PERIOD OF STABILITY

By Ron Pezon, PE & Jeff Heverley, PE

**The Borough's municipal electric utility has been diligently serving the power needs of our community for over 122 years,** but only recently again entered into a time of relative power supply cost and customer rate stability. Coming out of a time when customer rates were very high and proposed to go higher, the "Power Purchase Team" re-organized its power purchasing strategy to more closely resemble that of power purchasing outside the Borough or what is commonly now called "competition".

**Background:** Since about 2002, Chambersburg, regulated by the Federal Energy Regulatory Commission (FERC), has had the opportunity to shop the markets for wholesale power to re-sell to its now about 11,300 retail customers. For the first decade of this wholesale customer choice program, Staff and Council would bid out the entire wholesale power need of the Borough for a long term. Correspondingly, this entire power purchase then could come due all at once and at a time when prices might not be favorable.

... CONTINUED ON PAGE 13

Well, in fact that happened in 2008 along with the onset of the real estate and financial crises. Electric rates for the average residential customer in the Borough were raised by about 30 % from 2008 to 2010 in response to the electric price increases from the Borough supplier at the time. There were further rate increases planned, but due to public outcry, Council began ramping down rates in 2010 in preparation for the lower cost power which was anticipated starting in 2013. Instead of raising rates in 2010, Council approved overall rate decreases of 7.5% in June, 7.5% in October. In 2013, as the losses from the hard three years were beginning to be recovered, Council acted to again drop overall rates by 5% in May, and another 5% in November. In November 2014, Council took further action to approve rate maintenance through Ordinance 135-15 which further dropped rates by almost 4%. Ah, relief at last.

Chambersburg learned the hard lessons over those years and through it the Electric Department changed from purchasing all of its power supply primarily from one entity for one long period to bidding multiple blocks or increments of power over many different periods. The first more traditional block, was with the NY Power Authority and was hydro-power. Secondly, the landfill methane gas-to-energy plant and the Express Generator Feeder, "EGF" or "Extension Cord" went commercial in 2013. There have been numerous rooftop solar power systems installed within the municipal electric system since 2009. The new multiple block or portfolio approach approved by Council was responsible for significantly lowering and stabilizing power supply costs over the past three years.

The power purchase team continues to purchase power twice per year, and has stacked up numerous low-cost power supply products over varying time periods for our residents and well into the future (see stacked bar chart), thereby reducing electric price fluctuation risks like the Borough lived through in the last decade or so now. The portfolio of energy products (colored blocks represent power supply blocks) has demonstrated further in 2015 that, forward-looking, we are able to cost average prices down to their lowest levels for the foreseeable future. The various colored blocks represent the various power supply contracts already in place. The top grey bars represent the future power block purchases yet to be filled or power purchases to be made in real time from the marketplace.

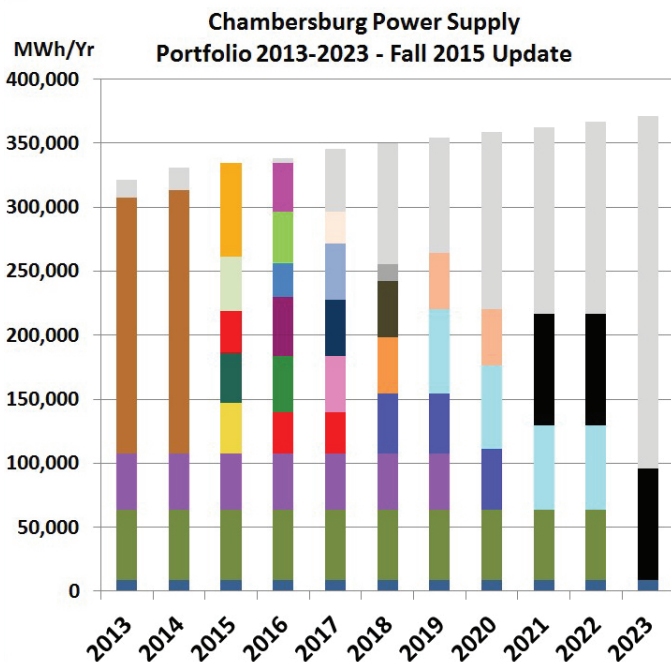
**Renewable Power:** Although not required by law, the Electric Department has set its sights on expanding the contribution from renewable energy sources, because it's just the right energy-sustainability thing to do. Presently about 15% of the Borough's energy comes from the EPA-award winning (2013 Project of the Year) Landfill Gas to Power Project located at the Scotland Landfill and is transmitted to the Borough through the Borough-owned "Extension Cord". Recall that this is the best, most complete form of "recycling" possible, where Borough trash is land-filled and decomposition of the trash materials over time forms methane gas in the landfill. The gas is collected through a gas-well system, cleaned up a bit, then compressed and injected into four landfill gas burning engine-generator sets. The power generated from the landfill gas generation plant is returned to Chambersburg in the form of "sustainable" electric power (local and replenish-able, needing less "outside" energy). Within certain regulatory limits of course, it's almost like the more good-gooey trash we send up there the more electric power we get back in exchange. In fact the plant owner (now Energy Power Partners) built the plant to quite easily add two more engine-generators at some future time. By design, the Borough's Extension Cord (see it along 181, north of Chambersburg) is also quite capable of handling the additional power flows into Chambersburg.



Approximately 2% of the Borough's electric energy, also on an annual basis, comes from a power purchase agreement with the New York Power Authority (NYPA) for hydro-based power. The power procurement team will work to renew the NYPA power purchase agreement in 2016.

Lastly on existing renewable energy sources, customer-owned roof top type solar generation installations of less than 0.25% of the Borough's annual overall portfolio helped somewhat to maintain the Borough's renewable energy use portion of the annual portfolio total at just over 17%.

Continuing the Borough's renewable, sustainable energy objectives, in 2015 the power purchase team evaluated a "community" large scale solar electric generation project ranging in size from 3 to about 8 MW of peak output during the longest sunny days of the year. The economics were somewhat attractive for a potential project in 2016 but made-so mostly through estimated and expiring renewable energy credits and Federal incentives. With an extension of incentives now well beyond 2016 and further equipment and installation cost reductions, the team may again look afresh at the economics of a community solar project.



**Borough-Owned Generation Assets:** Chambersburg buys all of its power “wholesale” and re-sells it through the internal transmission and distribution systems to its 11,300 customers. The only municipal electric utility in Pennsylvania to own generation, sells the output of its generation assets producing revenues from the Pennsylvania Jersey Maryland Interconnection (PJM) to help maintain lower overall power supply costs.

The department not only contracts for low cost future power as discussed earlier but owns two peaking power generating stations for the financial benefits of its customers, especially valuable during times of high market prices. The plant names are: The Falling Spring Generating Station (FSGS) and the Orchard Park Generating Station (OPGS).



**The FSGS is located on and visible from Grant Street**



**The OPGS is located in the Chamber 5 Industrial Park on Sheffler Drive and is visible to the east of Rt. 11**

By the time this document runs off the printing press, both Borough-Owned power plants will have received new environmental operating permits from the PA Department of Environmental Protection (DEP), OPGS in 2015 and the FSGS by the end of the first quarter 2016.

**Unfortunately, not all Borough properties are served by Borough electric. Some get power through West Penn Power.**

In addition to the two Borough-owned generating assets, Chambersburg has enjoyed a third commercial year of power purchases from the public-private venture originally with PPL Renewable Energy, now Energy Power Partners and the IESI Blue Ridge Landfill owned by Progressive Waste Solutions. Chambersburg purchases all of the power output from the landfill/gas harvesting and generation facility located near Scotland, PA. The plant generated 49,459,200 kWh of the total 319,635,858 kWh consumed by the customers of Chambersburg Electric in 2015 or about 15.5 percent of the annual total. The renewable/sustainable landfill gas plant power project and the Extension Cord to the Borough continue to help us stabilize rates at least through 2022.



**Landfill Gas Plant under Final Construction 2012**

Continuing on the initial financial successes that started back in 2013, and if overall financial trends continue in 2016, the department will have achieved the council-approved goal of restoring financials to the point where they were in 2008 prior to the sharp increases in power supply costs and depletion of operating and capital reserves. The Department is projecting a time of restored reserves and price stability for the foreseeable future using its power supply portfolio strategy and the existing borough-owned generation resources.

History has shown that there is not one source of energy that can satisfy the expanding needs of a community or a country for that matter. Chambersburg believes that multiple and varied sources of power purchases from traditional sources, markets, as well as renewable and Borough owned facilities will likely serve our community best for the next 100 years.

### **Emergency Generator at Recreation Center:**

The Borough's Recreation Center has been designated as an emergency shelter for its residents as needed. To ensure that the facility is operational even during extreme emergencies, the electric department upgraded the electric service to the building and finished installation of the interconnection facilities to connect a trailer mounted generator. The emergency generator was tested in-service and is available for long term operation during a Borough-wide or local power outage emergency as needed.



# WATER & SEWER METERING - RADIO READ TECHNOLOGY

By Lance Anderson, Superintendent & Travis Amsley, Asst. Superintendent

The 30 miles of transmission mains that deliver finished water from the Borough of Chambersburg water treatment plant, which lies eight miles east of Chambersburg in Fayetteville, to the customers of Chambersburg are not laid in a straight line along Route 30 from the water plant to Chambersburg. In fact, once past Garman Drive just east of Wal-Mart, the Borough's water mains are never along Route 30 again, having exited the plant from the back of the treatment plant and cut cross-country to the in-ground reservoir behind St. John's Drive.

The circuitous routing of water mains has allowed for service connections that are far removed from the Borough's water service area, yet still require a monthly reading of the meter in order to generate an accurate monthly bill. In total, there are approximately 160 Borough water service connections east of I-81, from along Route 30 to residences along Ragged Edge and Woodstock Roads, to Houser Road in Fayetteville behind the water plant. There are meters in pits that are in backyards of homes, behind locked access gates, and in right-of-ways in forests on the other side of creeks – and they all require reading on a monthly basis.

In the same fashion as meter reading performed inside the Borough, a meter reader would physically visit each meter and scan the remote touchpad with the read gun, in order to obtain a meter reading. Along Route 30, this would involve the constant moving of a vehicle, parking the vehicle, walking along Route 30 and its side roads collecting meter readings, backtracking to the vehicle, then repositioning the vehicle to start again. Outside of Route 30, on roads such as Woodstock, Ragged Edge, Treher, Mt. Pleasant, and Houser, the meter reader would have to park alongside the road or in a customer's driveway, read the meter, and move on to the next. The process was labor intensive at the least; dangerous at the most.

In October 2014, the Borough installed four radio-read MXUs on four of the most out-of-the way water meters outside of the Borough. On average, the meters chosen were slightly less than one-quarter of a mile from the road and were either behind a gate or on the other side of a stream. The MXUs were programmed using an existing handheld meter the Borough owns and were able to be read from a vehicle via handheld without the driver needing to exit the vehicle.

Installing and programming those four MXUs on existing meters in pits was by far the simplest part of the equation, which proved that the technology worked and could be further implemented to cover all meters east of I-81, enabling a meter reader to obtain all the monthly readings of water meters east of town from the confines and safety of a vehicle, not to mention in a much reduced amount of time. The difficult part of the equation was the application for a utility reference code with the license holder of the frequency at which the MXUs operate and integration of the meter readings obtained into the Borough's routing and billing software.

By summer of 2015, these issues had been resolved and the Borough had installed MXUs on nearly all of the water meters outside of the Borough. Then the largest hurdle to date occurred.

The Borough has around 100 customers in the northern part of Chambersburg that Guilford Water provides water service to and the Borough provides sewer service to, with Guilford supplying the water meter. Since sewer usage is billed as the equivalent of water usage, in terms of units used, in order for the Borough to bill for sewer on a monthly basis, it would read the Guilford water meters and bill the usage accordingly. The reverse occurred on a quarterly basis for Guilford Sewer Authority with Borough water customers along Route 30 – the Borough provides water service to these customers and Guilford provides sewer service.

The issue came to light when Borough meter readers began encountering Guilford-installed MXUs on Guilford's water meters on the north side of the Borough – meter readers could no longer gun the touch pad on the meter pit to obtain a reading with an MXU having been installed. The only way to obtain a reading was to physically open the meter pit, take apart the MXU, gun the touchcoupler, and then put everything back together. This was labor intensive and costly, as it was quickly discovered that MXUs are not designed to be taken apart and reassembled on a routine basis, and certainly not monthly. Working with Guilford and LB Water, the supplier of the MXUs, a solution was worked out in which the Borough and Guilford can read each other's meters via radio, using the other's profile. This was a tremendous accomplishment; otherwise, though the radio-read technology put each separate utility a step ahead, it put both utilities two steps back when it came to reading meters in the other's service area.

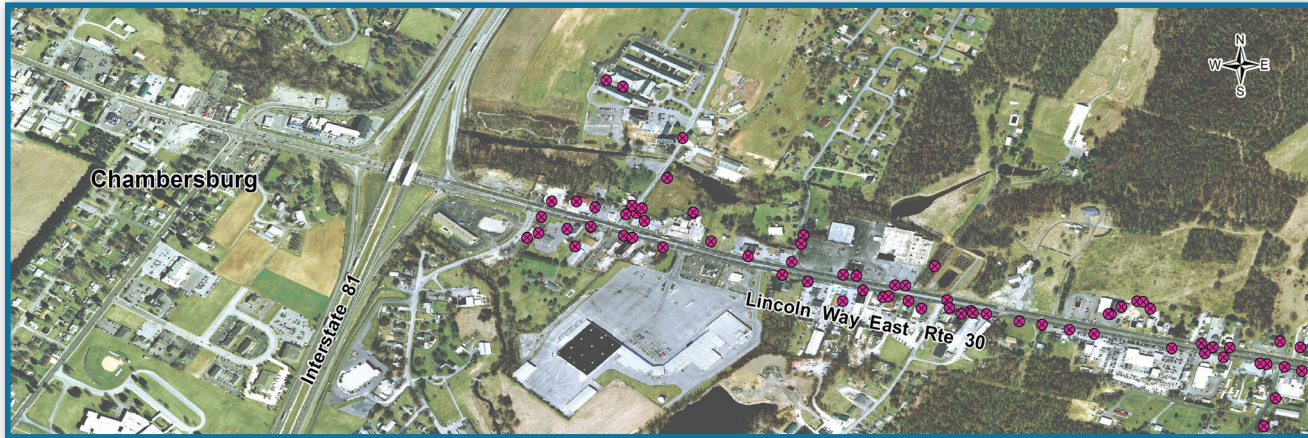
The goal of improving meter reading through safety and reduced time for the meters east of I-81 has been achieved. Less than 18 minutes into starting the reading, 80% of the 160 water meters outside the Borough have been read; usually, all meters have been read in less than an hour and one-half from starting. The radio-reads are not without issue – problems still exist and continue to surface on all sides of the technology, from hardware to software – yet the immediate benefits far outweigh the minor issues. It is the future benefits of radio-read technology that the Water and Sewer department now looks forward to.

Currently, all radio-read MXUs are read via handheld once prompted by the reader to begin reading, then the MXUs lie dormant, waiting once more for a prompt to transmit another meter reading, which generally only occurs once per month. If the Borough were to move towards a tower-based system, the radio-read MXUs would continuously transmit meter readings that would be logged and archived, enabling the Borough and water customers access to nearly real-time water usage data. A customer would be able to track individual water usage through an established website. The Borough would have the ability, through software, to be alerted of high water usage or suspected leaks nearly instantaneously, rather than through the current method of personnel interpretation of data every 30 days. A tower-based system also further removes the need of the meter reader to read a route, and shifts focus towards more important matters of meter maintenance and troubleshooting.

... CONTINUED ON PAGE 16

The radio-read MXU technology that the Water and Sewer utilities has incorporated also works with the Electric and Gas utilities, should those utilities decide to migrate to the technology. The groundwork has been completed in terms of initial set-up and determining what works best in terms of integration of meter reading and route and billing software – now it is a matter of fine-tuning the process for incorporation of the technology by other utilities into parts of the Borough's utility service areas that are most applicable. Those areas likely being customers that

are served by all four utilities, beginning with the more difficult to read meters, be it a meter in a basement or a meter on difficult to access property. The benefits of reduction in time spent reading meters and the subsequent shift in focus towards meter maintenance and troubleshooting presently exist for all utilities with the installation of radio-read MXUs; as do the long-term benefits of significantly improved meter data acquisition and analyzation associated with transitioning the current technology to a tower-based read system.



Borough installed MXU's east of I-81 (MXU's are noted in red).



## MEET THE STORM SEWER SYSTEM MANAGER

By Andrew Stottlemeyer

**ANDREW STOTTEMYER**  
Municipal Separate Storm  
Sewer System (MS4) Manager

The Borough of Chambersburg has a large storm sewer system of pipes, inlets, basins and other facilities that ultimately drain to the Conococheague Creek and Falling Spring Creek. The system is regulated by a local Stormwater Management Ordinance as well as a state and federal separate storm sewer system permit, known as a MS4 Permit. Unlike the other Borough-owned utilities (electric, gas, sanitary sewer and water), for generations there was no dedicated revenue source to support storm sewer system maintenance and regulatory compliance.

That changed in January 2015 when the Borough began operating a Storm Sewer Utility that generates its revenue through a Storm Sewer Pollution Control Fee assessed at \$3.00 for every sanitary sewer connection to a building. A single-family dwelling has one sanitary sewer connection, so a homeowner or tenant pays \$36 per year to support operation, maintenance and capital improvements associated with the storm sewer system.

The largest first year action item for the Storm Sewer Utility was to hire a Storm Sewer System Manager to be responsible for

day-to-day management of the storm sewer system and stormwater management program. That was accomplished on April 1, 2015 when Andy Stottlemeyer was employed as the Borough's first-ever Storm Sewer System Manager. Since then Andy has worked hard to become knowledgeable of the MS4 Permit, Stormwater Management Ordinance and Floodplain Ordinance regulations all of which he is responsible for compliance and enforcement.

Public education and outreach are Andy's favorite and most important responsibilities. He is the spokesperson for the Storm Sewer Utility that your Storm Sewer Pollution Control Fee supports and is eager to share information about the Borough's stormwater management program.

Andy is available to talk with you by calling 717-709-2289 or stopping by Borough Hall at 100 South Second Street. He can be reached by email at: [astottlemeyer@chambersburgpa.gov](mailto:astottlemeyer@chambersburgpa.gov)

Andy is also available to share information with small or large groups at service club or organization meetings, school classrooms or assemblies or any other gathering where there is interest in learning more about the Borough's stormwater management program. Please contact Andy if you would like him to speak at your meeting or event.



# PLEASE KEEP GRASS CLIPPINGS OUT OF STORM DRAINS

The Borough of Chambersburg asks that residents and business owners keep grass clippings on your property and off of the sidewalk, curb and street. Local law (Chapter 109) prohibits any grass clippings to be placed into a public street or alley along the curb line in such a manner that the clippings cover, or could cover, a storm drain or enter the storm sewer system. Dumping or hosing of grass clippings into a storm drain or the storm sewer system is also prohibited. Grass clippings can clog storm drains and the storm sewer system, which may result in street flooding. Grass clippings can also harm the Conococheague Creek and Falling Spring Creek, where the Borough storm sewer system empties.



## WHAT YOU CAN DO:

- Keep all grass clippings on your property; off of the curb and sidewalk and out of the street.
- Compost grass clippings on your property away from storm drains, wetlands and streams.
- Grass clippings can be bagged and placed at the curbside or other designated area for collection by the Borough Sanitation Department on your regularly scheduled weekly trash collection day. Please note, the number of trash receptacles or bags – including those with grass clippings – collected from any one household unit per week is limited to three unless accompanied by a tag purchased from the Borough for each receptacle or bag over three.
- If you see a storm drain that is clogged and can clear it without placing yourself in danger, please remove the grass clippings or other debris. If you cannot, or do not want to, clear the storm drain, please contact the Borough Customer Service Center at:

**717-263-4111 or [servicecenter@chambersburgpa.gov](mailto:servicecenter@chambersburgpa.gov).**

## Borough of Chambersburg

If you would like to learn more about the municipal separate storm sewer system (MS4), please visit the Borough website at: [www.chambersburgpa.org](http://www.chambersburgpa.org), click on the Documents link and then scroll down to the Storm Sewer section. Or contact Andrew Stottlemeyer, Storm Sewer System Manager at **717-709-2289** or [astottlemeyer@chambersburgpa.gov](mailto:astottlemeyer@chambersburgpa.gov)

# CHAMBERSBURG BOROUGH GREEN YARD WASTE RULES HAVE CHANGED FOR 2016

The Borough now has a new and improved system for the recycling of green yard waste and other items, in keeping with State and Federal laws. These rules are strictly enforced.

The Borough's new green yard waste recycling center will re-open in 2016 on W Commerce Street, just off N Franklin Street, in Hamilton Township. The old site, at the Borough Farm, off Hollywell Avenue, is no longer available to the public. The new site will be open Tuesday through Saturday, 8 a.m. to 4 p.m., and residents must buy a pre-paid Green Yard Waste Card at City Hall before using the site. Contractors, Landscapers, and Landlords will be invoiced for their waste and they should open an account at City Hall during regular business hours.



## GREEN YARD WASTE DROP OFF NEW RULES:

**ELIGIBLE GREEN YARD WASTE:** Acorns, Bark, Branches, Brush, Bushes, Flowers, Foliage, Kindling, Knots, Leaves, Fall Tree Leaves, Limbs, Plants, Roots/Rootballs, Sawdust, Shrubs, Twigs, Wood chips

**NO TREE TRUNKS – NO LOGS**

**DO NOT DUMP LARGE PIECES OF WOOD**

**The Borough will no longer receive tree trunks that exceed the size and weight limits below:**

No individual item may weigh more than 30 lbs

No individual item may be longer in length than 6 feet

No individual item may have a diameter in excess of 6 inches

Organic material may need to be chopped or chipped prior to delivery to the site to meet these requirements

In general, logs and trunks must be cut down in order to meet size/weight limits

### NO GRASS CLIPPINGS

The Borough will no longer accept grass at our facility. Grass may be considered trash or composted. Per Pennsylvania DEP, grass can be recycled on your property. Grass can be mulched and left on your lawn to help it grow or deposited in a backyard compost heap. Grass overwhelms our yard waste program.

Grass might be placed in trash bags or cans and left out with your municipal solid waste for collection and disposal.

### FALL LEAVES COLLECTED CURBSIDE

The Borough will continue to collect fall leaves at both our new facility and when we collect fall leaves curbside at your house. We encourage you to let the Borough collect and recycle fall leaves through our separate collection program.

Property owners should sweep and rake fall leaves loose to the curb line/wind row for on street collection by the Borough. Leaves do not need to be placed in bags; they should be left loose for collection. If you want to bag leaves, please use Kraft style paper bags, which are available through home improvement retailers.

### NO PLASTIC BAGS DO NOT DUMP PLASTIC BAGS

The Borough cannot receive any plastic bags as the plastic is not recycled by our program. Eligible waste should be dropped at the facility either loose or in Kraft style paper bags, which are available through home improvement retailers. Waste in plastic bags will be rejected.

### NO TRASH OR CONSTRUCTION DEBRIS DO NOT DUMP CONSTRUCTION WOOD

Beams, block, brick, concrete, construction wood, decking, dirt, dowels, grime, gypsum, metal, nails/tacks/fasteners, pallets, paneling, plastic, plywood, shale, shingles, siding, soil and stone are all ineligible waste.



**RECYCLE OFTEN.  
RECYCLE RIGHT.™**



## *Borough of Chambersburg*

**Beginning now, residential trash customers have single stream recycling:**



**Plastic Bottles  
& Containers**



**Food & Beverage  
Cans**



**Paper**



**Flattened Cardboard  
& Paperboard**



**Food & Beverage  
Cartons**



**Clear, Green &  
Brown Glass**

**Do NOT include in your mixed recycling bin:**



**NO Food Waste**  
(Compost instead!)



**NO Plastic  
Supermarket  
Bags & Film**



**NO Foam Cups,  
Packing Peanuts  
& Containers**



**NO Needles**  
(Keep medical waste out of recycling. Place in safe disposal  
medical trash containers)

**To Learn More Visit:  
[RecycleOftenRecycleRight.com](http://RecycleOftenRecycleRight.com)**

#RORR

**Please place recycling all in one bin to be picked up by  
Waste Management on behalf of Chambersburg every week  
on the same day and in the same place as your Borough  
trash pick up.**

# CHAMBERSBURG LOCAL LAW ON TEMPORARY SIGNS

GOOD



NOT GOOD



GOOD



NOT GOOD



## WHERE ARE SIGNS GENERALLY PROHIBITED?

Essentially, the space between the building-side edge of the sidewalk and the curb OR about four to six feet from the street surface is considered the Right of Way. While the Right of Way may not be the same from street to street, it is generally the area near the street. This ban includes (but is not necessarily limited to) real estate signs, yard sale signs, political signs, lost animal signs, etc.

No signs on medians, traffic islands, street lights, traffic sign poles, telephone poles, and garbage cans (all of which are almost always inside the right of way).

**SIGNS ARE PROHIBITED IN THE "RIGHT OF WAY"**

Borough of Chambersburg - [www.chambersburgpa.gov](http://www.chambersburgpa.gov) - For information call Code Enforcement at (717) 261-3232

# 2016 FINANCE DEPARTMENT FORECAST

By Jason Cohen, MPA, Finance Director

In 2015, the Borough's Finance Department took the lead in an involved Request for Proposals process intended to consolidate the Borough's banking and investment operations, with the ultimate goal of reducing operating costs and increasing investment earnings. Ultimately, the Borough selected Susquehanna Bank (now BB&T), and their investment firm subsidiary, Valley Forge Asset Management. The subsequent relationship has resulted in the Borough's shedding of all fees associated with banking operations, and a substantial increase in interest and investment revenues, with said revenues anticipated to be approximately 361% greater than in 2014. The Finance Department, in conjunction with the Human Resources Department, also oversaw a Request for Proposals process for custodial and payment administration services for the Borough's pension plans. While in contrast to many municipal pension plans, the Borough's are well funded, this process resulted in a consolidation of services which will in turn allow for the investment of all of the plans' assets, and should ultimately cause the Borough to realize greater investment returns. These increased returns should further lessen the burden on the Borough's operating revenues of funding the plans. The Finance Department also administered the Borough's first formal Payment In Lieu of Taxes solicitation campaign, in which tax exempt agencies who pay no property tax, yet still receive the benefit of municipal police and fire services, were requested to contribute towards those services, in lieu of taxes. The campaign raised \$26,975 to be used towards those services, which the Borough would not have otherwise received.

Additionally, in 2015, the Collections/Tenants Rights Clerk position was created for the purpose of administering a newly-

developed collections process for all types of outstanding receivables. The new position/process resulted in the collection of 24% of delinquent debt identified as collectible by September 2015, and has significantly mitigated the number of outstanding invoices being placed into third-party collections. The position was filled internally by then-Account Technician Michelle Stine, whose position was filled by Nancy West, our newest staff member. Also in 2015, the Lead Custodian position; primarily responsible for the maintenance and upkeep of City Hall, was revamped into the Buildings, Grounds, and Maintenance Supervisor position, in an attempt to bring an all-encompassing approach to the maintenance of Borough facilities. The position was filled from within, by long-time sanitation Department Supervisor Arnold Barber.

The Finance Department again received recognition from the Government Finance Officers Association, via the award of the Certificate of Achievement for Excellence in Financial Reporting, for its Comprehensive Annual Financial Report for the Fiscal Year Ended December 31, 2014.

Finally, the Finance Department, working closely with the IT Department and the Borough Manager's office, continues to lay the groundwork for the implementation of a new enterprise resource planning software package, via an in-house needs analysis, which will be conducted in order to assess the potential requirements of a new Borough-wide software package. The intent of such implementation is to increase communication and productivity amongst the Borough's multiple departments, thereby leading to a more efficient use of taxpayer dollars.

## TAX REMINDER

We would like to remind residents that you may be subject to a local Earned Income and Net Profits Tax (EIT). If you reside in the Chambersburg Area School District, the tax rate is 1.7% and if you reside in one of the other Franklin County area school districts the tax rate is 1%. The tax is shared with the township or borough you reside in receiving one-half percent of the tax and the remainder going to your school district. The tax is collected by:

### FRANKLIN COUNTY AREA TAX BUREAU

443 Stanley Ave  
Chambersburg, PA 17201-3600

Phone: (717) 263-5141  
Web Site: [www.fcatb.org](http://www.fcatb.org)

- If you have recently moved into the area and have not received a tax return, contact the tax bureau.
- If you are self-employed or work outside of Pennsylvania and your local tax is not withheld, you must make quarterly estimated payments of your non-withheld tax liability.
- Another tax collected by the tax bureau is the Local Services Tax (LST). The LST is based on where you work regardless of where you live. It is typically deducted from your pay check; but if you are self-employed in a Franklin County jurisdiction, or work for an employer that is not deducting the tax, you must pay the tax directly to the bureau.

**Contact the tax bureau, or refer to their web site for additional information concerning the local earned income tax and the local services tax.**

# Condensed Financial Statement

## 2015 ACTUAL

<b>REVENUES:</b>	<b>AMOUNT:</b>
Taxes: Property, Wage, Deed Transfer, Emergency & Municipal & PILOT	\$9,467,959
Police Fines & Costs	\$181,990
Recreation Department - Pool & Park Receipts	\$330,966
Federal, State & Other Reimbursements	\$1,179,864
Licenses, Permits, Ambulance, & Other Receipts	\$2,787,671
Enterprise Funds	\$62,255,073
Internal Service Funds	\$9,292,278
Payroll, Employees' Pensions & Other Trust Funds	\$15,618,891
Surplus Operating Funds from preceding Fiscal Year	\$29,643,971
Surplus Special and Reserve Funds from preceding Fiscal Year	\$21,748,289
<b>TOTAL RECEIPTS</b>	<b>\$152,506,951</b>
Inter-Fund Transfers	\$9,250,848
<b>TOTAL RECEIPTS AND INTERFUND TRANSFERS</b>	<b>\$161,757,799</b>
<b>APPROPRIATIONS:</b>	
Fire, Ambulance, & Police	\$8,065,938
Highway, Traffic & Lighting	\$2,617,411
Public Recreation	\$1,435,402
General Administration	\$(7,503)
Community Development	\$2,031,597
Enterprise Funds	\$61,745,729
Internal Service Funds	\$8,201,392
Payroll, Employee Pensions & Other Trust Funds	\$15,600,932
Surplus Operating Funds from preceding Fiscal Year	\$32,260,149
Surplus Special and Reserve Funds from preceding Fiscal Year	\$20,556,075
<b>TOTAL EXPENDITURES</b>	<b>\$152,507,123</b>
Inter-Fund Transfers	\$9,250,848
<b>TOTAL EXPENDITURES AND INTERFUND TRANSFERS</b>	<b>\$161,757,971</b>

## PROPERTY TAX RATES - DIRECT AND OVERLAPPING GOVERNMENTS

Tax Year	Borough of Chambersburg	Chambersburg School District	Franklin County	Franklin County Library
2015	23.5 mils	98.426 mils	25.65 mils	1.05 mils
2014	23.5 mils	96.12 mils	25.65 mils	1.05 mils
2013	20.0 mils	93.685 mils	25.65 mils	1.05 mils
2012	20.0 mils	92.76 mils	25.65 mils	1.05 mils
2011	20.0 mils	92.76 mils	25.15 mils	.08 mils

1. Chambersburg Town Council adopts only the Borough rate; not the other rates.
2. Chambersburg Town Council did not raise taxes for six years prior to 2014.
3. Your Borough Property Tax represents only 17¢ of every \$1 paid in property taxes in 2015.
4. The Borough also collects Earned Income Tax, Deed Transfer Tax, and Local Services Tax.

# 2016 ROSTER

MAYOR AND MEMBERS OF TOWN COUNCIL OF THE BOROUGH OF CHAMBERSBURG, PENNSYLVANIA

## COUNCILMEN

**Alice C. Elia**  
First Ward - 2016-2019  
aelia@chambersburgpa.gov

**Samantha J. Bietsch**  
Second Ward - 2016-2019  
sbietsch@chambersburgpa.gov

**Kathy J. Leedy**  
Third Ward - 2016-2019  
kleedy@chambersburgpa.gov

**Sharon A. Bigler**  
359 High Street  
Fourth Ward - 2016-2019  
(r) 263-5524  
sbigler@chambersburgpa.gov

**Herbert R. Dolaway**  
1135 Brookwood Drive  
Fifth Ward - 2016-2019  
(r) 264-9058  
hdolaway@chambersburgpa.gov

**Allen B. Coffman**  
President of Council  
112 Pennsylvania Avenue  
First Ward - 2014-2017  
(r) 267-2739  
acoffman@chambersburgpa.gov

**John A. (Sean) Scott**  
473 East Liberty Street  
Second Ward - 2014-2017  
(r) 263-7365  
sscott@chambersburgpa.gov

**Louisa C. (Lou) Cowles**  
535 Oak Street  
Third Ward - 2014-2017  
(r) 267-2769  
lcowles@chambersburgpa.gov

**Jeremy D. Cate**  
75 West Queen Street  
Fourth Ward - 2014-2017  
(r) 414-1918  
jcate@chambersburgpa.gov

**Heath E. Talhelm**  
Vice-President of Council  
840 Brandon Drive  
Fifth Ward - 2014-2017  
(r) 263-1108  
htalhelm@chambersburgpa.gov

## MAYOR

**Darren Brown**  
916 South Fifth Street  
Chambersburg, PA 17201  
2014 - 2017  
Mayors Office 261-3243  
mayor@chambersburgpa.gov

## COUNCIL MEETINGS

7:00 PM  
Regular Public: 2nd and 4th  
Mondays - Council Chambers  
Check website for calendar

### OFFICE ADDRESS:

100 SOUTH SECOND STREET,  
CHAMBERSBURG, PA 17201

### OFFICE PHONE:

(717) 264-5151 EXT. 3201 OR 3254

# BOROUGH STAFF

**Jeffrey Stonehill**  
Borough Manager  
Director of Utilities  
(b) 261-3245

**David C. Finch**  
Assistant Borough Manager  
Public Works Director  
(b) 261-3200

**Phil Wolgemuth**  
Assistant to the Borough  
Manager / Land Use and  
Development Director  
(b) 261-3232

**Jamia L. Wright**  
Borough Secretary  
(b) 261-3254

**Kristine M. Baker**  
Assistant Borough  
Secretary  
(b) 261-3201

**G. Bryan Salzmann**  
Borough Solicitor  
(b) 263-2121

**Welton J. Fischer**  
Assistant Borough Solicitor  
(b) 264-8020

**Ron Pezon**  
Electric Superintendent  
(b) 261-3238

**Jeff Heverley**  
Assistant Electric  
Superintendent  
(b) 261-3236

**John Leary**  
Gas Superintendent  
(b) 261-3234

**Jon Mason**  
Assistant Gas Superintendent  
(b) 263-6385

**Lance Anderson**  
Water and Sewer  
Superintendent  
(b) 709-2285

**Travis Amsley**  
Assistant to the  
Water and Sewer  
Superintendent  
(b) 261-3237

**Andy Stottlemeyer**  
Storm Sewer System  
Manager  
(b) 709-2289

**A. Elwood Sord**  
Assistant Public Works  
Director  
(b) 261-3233

**Howard Leonhard**  
Emergency Services Chief  
(b) 261-3230

**Dustin Ulrich**  
Assistant Emergency  
Services Chief  
(b) 261-3230

**Guy Shaul**  
Recreation  
Superintendent  
(b) 261-3275

**Julie Redding**  
Assistant Recreation  
Superintendent  
(b) 261-3275

**William F. Dubbs, Jr.**  
Property Maintenance  
Code Officer  
(b) 261-3262

**Kathy Newcomer**  
Community Development  
Specialist  
(b) 261-3208

**Paul Cullinane**  
Economic Development  
Specialist  
(b) 264-5151

**Jason Cohen**  
Finance Director  
(b) 261-3248

**Rachel Krum**  
Assistant Finance  
Director  
(b) 261-3255

**James S. Clapper**  
Wage Tax Collector  
(b) 263-5141

**Brenda Hill**  
Borough Tax Collector  
(b) 263-6565

## BOROUGH OF CHAMBERSBURG

100 SOUTH SECOND STREET | CHAMBERSBURG, PA 17201-0909  
boroughsecretariesoffice@chambersburgpa.gov

[www.chambersburgpa.gov](http://www.chambersburgpa.gov)

BOROUGH OF CHAMBERSBURG  
100 SOUTH SECOND STREET  
CHAMBERSBURG, PA 17201-0909

PRSR STD  
U.S. POSTAGE  
PAID  
THE MAILMAN  
ECRWSS

ECRWSEDDM  
POSTAL CUSTOMER  
CHAMBERSBURG PA 17201



\*Front Cover Photo Credit: Golden Image Photos

# BOROUGH OF CHAMBERSBURG

100 SOUTH SECOND STREET | CHAMBERSBURG, PA 17201

[boroughsecretariesoffice@chambersburgpa.gov](mailto:boroughsecretariesoffice@chambersburgpa.gov)

[www.chambersburgpa.gov](http://www.chambersburgpa.gov)